



Network Setup

Ver.3.0.*. Firmware

Settings Up Network on Xtreamer

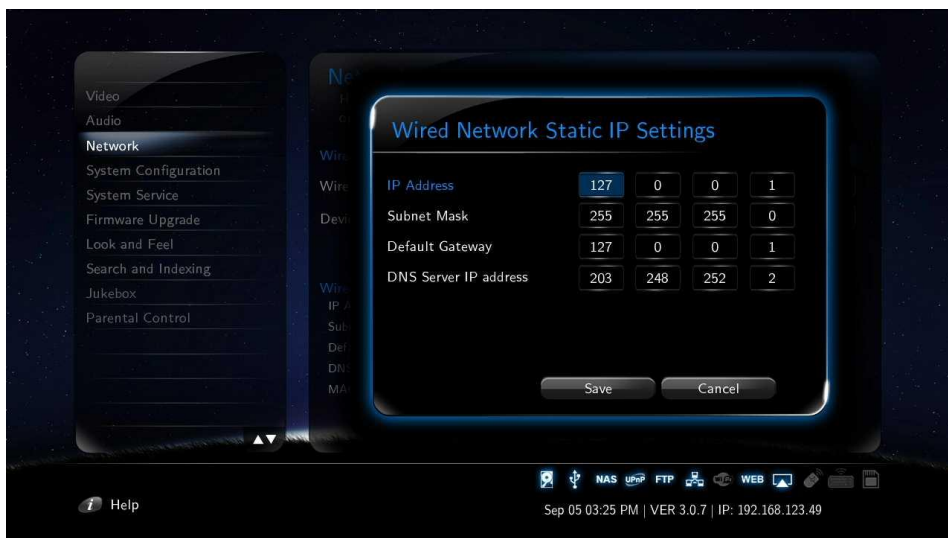
1. Setting up Wired Network



DHCP IP (AUTO)

The Dynamic Host Configuration Protocol DHCP is a networking protocol used to automatically retrieve IP address assignments through Wired LAN. This feature is set as a default value so that IP address is automatically assigned by RJ45 connecting and rebooting. You need a network router in order to stream files from your PC.

※ IP address of DHCP IP may sometimes be unstable.

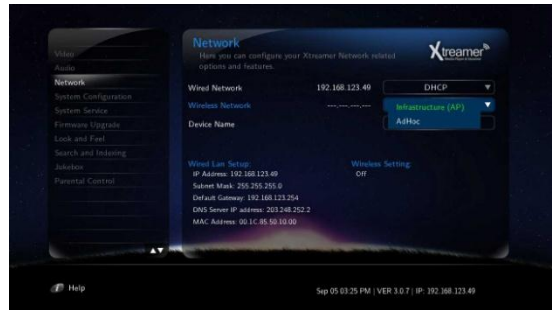
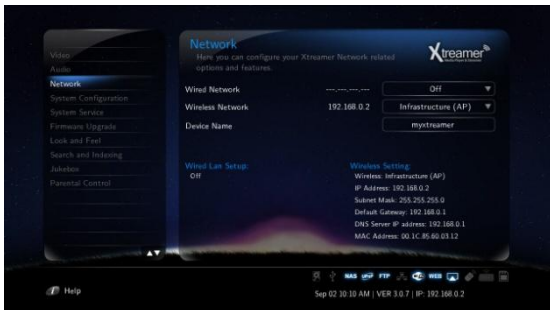


STATIC IP (MANUAL)

Static IP is a manual way of obtaining an IP address, and is used for an assigned IP address that does not change often that being so it will most likely receive the same IP address through Wired LAN. IP will be allocated by users when a fixed IP address is needed or DHCP server isn't available.

Settings Up Network on Xtreamer

2. Wireless LAN Setup



1. Choose Wireless Network option.
2. Select [Infrastructure (AP)].



3. Select SSID type (available wireless network), you want to use.
4. Enter correct passkey, and then press [OK].



Note

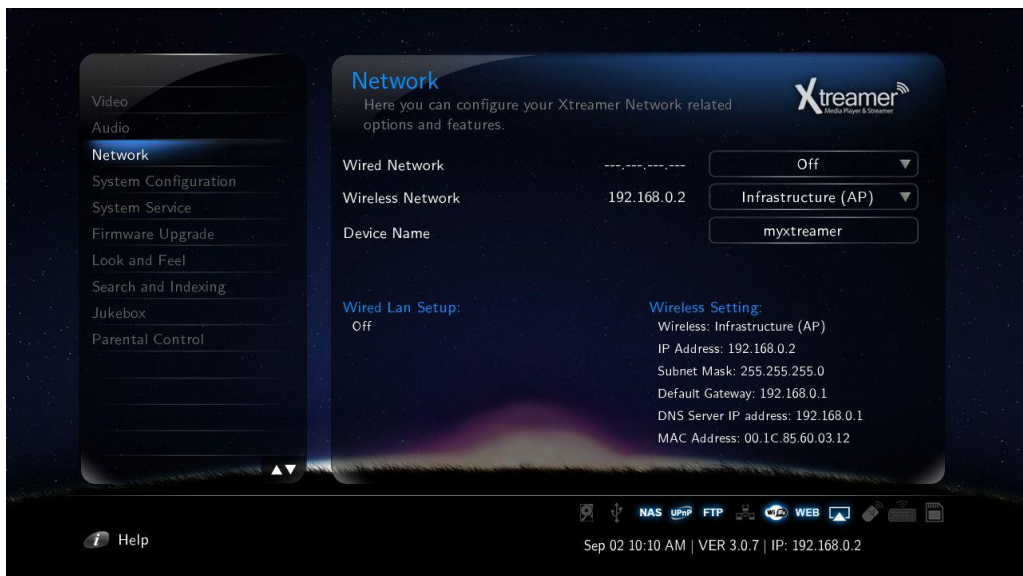
- Only "Web hex character codes" is supported.
- Web hex encoding supports 64-bit and 128-bit integers capable.
- If you have the problem of unstable wireless network or low speed, check your wireless channels for optimum signal strength. Changing channel is available through your router.

Settings Up Network on Xtreamer

2. Wireless LAN Setup



5. Navigate to OK button and press ENTER to test the connection.



Device Name

Use this option to give your Xtreamer a unique name under which it will appear on your local Network.